



## Highcliffe School Student Bulletin

Monday 12<sup>th</sup> – Friday 16<sup>th</sup> Dec: Week A

### General Notices

#### **Mufti Day Friday 16th December (MYP)**

There will be a whole school 'Christmas mufti day' on Friday 16th December. Students are asked to contribute £1 in cash to their form tutor on the last day of term. The normal constraints regarding 'mufti' will apply: students are expected to dress in a suitable way for the school day, for example, they should not wear clothing which displays offensive or inappropriate motifs or logos. Similarly hats and hoods should not be worn inside the school building and the normal health and safety rules will apply to the wearing of jewellery and footwear. No changes to hair colour or style should be made. Students should also ensure that they attend school properly equipped for their lessons.

#### **Christmas Concerts (MYP)**

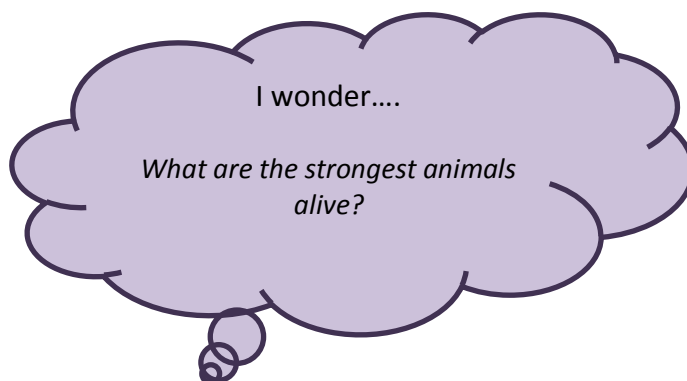
Students in years 7-9 will be attending mini-versions of the School Christmas Concert on the last day of term. All students are to go to their lessons as normal and will be taken to the Hall at the correct time.

#### **Christmas Lunch Wednesday 14th December (MYP)**

Year Seven students may leave class at 1.05pm during Period 4 on Wednesday for the Christmas lunch in the canteen.

#### **11.8 RSPB Save the Albatross (JBN)**

11.8 are collecting used postage stamps as part of the RSPB Save the Albatross campaign. Please can you bring in your used postage stamps, UK or overseas. Please cut the stamp off the envelope or parcel, leaving around one centimeter of envelope or packaging around each stamp. There are collection points in the Staff Room and IT3. Thank you.





**Christmas Concert THURSDAY 15<sup>th</sup> DECEMBER – 7PM**



If you are in the Christmas Concert!

**Thursday 15<sup>th</sup> December – ALL DAY DRESS REHEARSAL. Check below for when you are needed. Please come to the main hall to be registered – NOT YOUR TUTOR ROOM! BTEC year 10** music students will be needed all day (exam conditions – controlled assessment). **Lighting Team** will be needed all day. **Soloists** - Make sure your backing tracks have been emailed to Miss Riley or Mr Bannister before the dress rehearsal. Please ensure you send us an MP3 file. Not a YouTube link!

<p>Tutor time and Period 1 and 2</p>	<ul style="list-style-type: none"> <li>• Djembe Group (Simon Mellish)</li> <li>• Ukulele and Guitar group (RBR.AWI) – <i>Wallace and Gromit; Stitches</i></li> <li>• Woodwind Group (ERY) – <i>Air; Now Thank We All God</i></li> <li>• Highcliffe Choir and Choir band (ERY) – <i>Sorry; Living on a Prayer; Still haven't found what I'm looking for</i></li> <li>• Jess Dawson King and Megan James – <i>Baby it's cold outside</i></li> <li>• Issy Whitlock, Shelby Man and Connie Murdoch – <i>Santa Baby</i></li> <li>• Ellie Evans - <i>Hallelujah</i></li> <li>• Sydney Brophy, Rowan Brophy, George Weller and Casey Jade Vines – <i>A Thousand Years</i></li> <li>• Cameron Solly, Jack Lockyer, Jake Cross, Joe Reid, Louise Bach - <i>Closer</i></li> <li>• Sammy Smith, Louise Bach, Connie Murdoch, Stephanie Fletcher Jones, Jack Ogden, Shelby Man, Melissa Copson – <i>If I Believe</i></li> </ul>
<p>Period 3 and 4</p>	<ul style="list-style-type: none"> <li>• Concert Band (AWI) <i>Jurassic Park, March, Christmas Bonanza</i></li> <li>• BTEC 12 (AWI) <i>Silent Night</i></li> <li>• BTEC 13 (ERY) <i>Red; Green</i></li> <li>• KS3 Drama and Dance (BSH and AWS)</li> <li>• Louise Bach, Elena Larder, Jasmine Lunn (flute trio) – <i>Allegro I</i></li> <li>• Chantelle Warren – <i>I dreamed a dream</i></li> <li>• Jacques D, Curtis and Josh – <i>Self-Aware</i></li> <li>• Max Elmore, Toby Budge, Archie Jameson – <i>What You Know</i></li> <li>• Melissa Copson and Aimee Armstrong – <i>Safe and Sound</i></li> </ul>
<p>Period 5</p>	<p>ALL STUDENTS NEEDED including hosts for the evening (Nathan Smith and Beth Allum)</p> <p>Run through of order for evening</p> <p>Rehearse large ensemble groups (if possible)</p>

**Friday 16<sup>th</sup> December – EVERYONE will be involved with Christmas Assemblies (starting during tutor time - please get registered with your tutor quickly and come straight to the hall. First concert @ 8.45am)**

## **Music Clubs**

Our music clubs are open to all year groups.

	<b>Lunch</b>	<b>After school</b>
<b>Tuesday</b>	Woodwind <b>Ex3</b>	Production
<b>Wednesday</b>	Theory <b>Ex5</b> , Choir	Choir Band <b>Ex3</b>

## **LITTLE SHOP OF HORRORS REHEARSALS 'RONETTE'S':**

Please meet in the Performance Hall every Tuesday lunchtime ASAP. If you need a lunch pass for the canteen, please come to the Expressive Arts office before Tuesday Lunch.

Little Shop of Horrors will be doing a full run of (almost all of) Act 1 on Tuesday 13<sup>th</sup> December after school in the Performance Hall until 5pm. All cast, dancers, band etc. will be needed.

## Clubs and Revision Sessions

### **Biology Support sessions (RCN)**

A level Biologists are encouraged to check their email as there are a range of support sessions that are now ongoing for year 12 and year 13. Details of these have been sent to all A level classes. Please contact Mr Craven in SC12 if there are any questions regarding these.

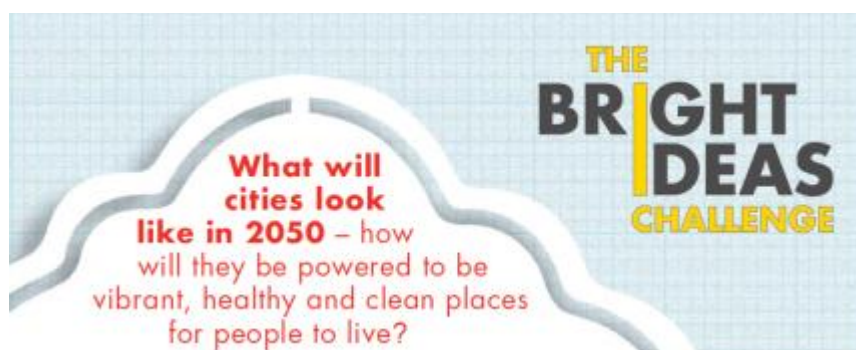
### **Eco club (RCN)**

Eco club 2016 is up and running! We have started to clear the garden from last year in preparation for the next growing season. The Eco club meets every Thursday after school until 16:00. We meet in the garden if weather is clear, SC12 if it is wet! All lower school students are welcome to attend and learn how to grow their own food. Suitable outdoor clothing is essential and suitable footwear (wellington boots) highly recommended.

### **STEM Tech club**

Takes place on Wednesdays each week. The club has started well with 6 teams of students signed up to enter the BP Bright Ideas competition to design a solution to power a city on the south coast in 2050. The students were all working hard to start initial ideas for this challenge which we are aiming to complete just after February half term to be in with a chance of a substantial cash prize! If you'd like to join in then come along Wednesday 15<sup>th</sup> December, SC1 – the lab near the student gate.

James, Beth and Pat





## My Help Live

Support and guidance

Progression and development

Breakthrough and achievement

**Extended Learning Time in our Learning Centres**

Break and Lunchtime Monday-Friday		After School Monday-Thursday	
LS1	11.00-11.20am	Library	3.05-4.00pm
LS1	13.30-13.55pm	IT2	3.05-4.00pm
IT2	13.30-13.55pm		

## Literacy

### Spelling Focus

### Closing the Gap

Here are two simple strategies to tackle those spellings that you find tricky and to “Close the Gap”:

1. Find the “word-within-the word”.

Where is the “Danger Zone” for separate?

The Danger Zone for this word is in the middle. How can we remember that it is an “a” after the “p”?

Use the word-within-a-word strategy:

There is **a rat** in “separate”.

*With what other words would this strategy be useful?*

2. Make a silly sentence

“Because” is a word that creates problems. However, the silly sentence strategy helps us to remember it:  
**Big Elephants Can Actually Understand Small Elephants.**

Here’s a good one for “necessary”. I’ve put this word’s Danger Zones in bold. A way I remember this is to say “It is necessary for a shirt to have one collar and two sleeves.” This helps me remember that “necessary” needs one “C” and two “S”s. (By the way, there is another Danger Zone in this word. Do you know what it is?)

*With what other words would this strategy be useful?*

So, when a teacher asks you to check or correct a spelling that you are often getting wrong, think about if you can use one of the above strategies to “Close the Gap”!

## STEM Clippings

As we come to Christmas we should be thankful for possibly the greatest invention – the automatic dishwasher!  
Thank you Josephine Cochrane for your vision from all the way back in 1893!

## PE Notices

### FIXTURES/PRACTICES 12<sup>th</sup> -16<sup>th</sup> December

	LUNCHTIME (1.25-1.55pm)	AFTER SCHOOL (3.05-4.10pm)
Monday	Year 9 Basketball Club (SHM)	Year 7 Football v Broadstone Middle (A) (SHM) KO 2pm
Tuesday	Years 10 & 11 Basketball Club (NJS)	Year 7 'B' Team Football 6-a-side @ Arnewood (NJS)
Wednesday		Year 7-10 Netball Club (MWR/HWH) Finish at 3.50pm Year 8 'B' Team Football 6-a-side @ Arnewood (NJS)
Thursday	Year 7 Basketball Club (NJS)	Year 12/13 Football v Poole High (A) (SHM) KO 1.45pm Year 7 & 8 Girls Basketball Club (LSN) All years Girls Football Club (HWH/CFM)

## Exams

### **YEAR 13 ARE YOU RE-SITTING GCE EXAMS NEXT SUMMER?**

Please get your re-sit entry from your tutor. The **deadline** for submitting the forms is Monday 16<sup>th</sup> January.  
Please see your email from Data and Examinations Office for more information.